

RF Directional Couplers  
 Copyright by Michael G. Ellis, Ph.D.  
 Electronic System Products  
 A division of ANTEC

*The equations that describe the performance of transformer based directional couplers are derived. The best theoretical performance available from a directional coupler, using ideal transformers, is a function of the turns ratio, and the terminating impedances. At VHF and UHF frequencies, wire gauge and core material can be chosen to closely approximate the response based on the solution of these equations.*

A directional coupler separates signals based on the direction of signal propagation. These devices are used to unequally split the signal flowing in the mainline and to fully pass the signal flowing in the opposite direction. In an ideal situation some portion of the signal flowing into port A will appear at Port C. Likewise any signal flowing into port C will be coupled fully to port A. However ports B and C are isolated in that any signal flowing into port B will not appear at port C but will feed through to port A. The generic RF directional coupler symbol, shown in Figure 1(a), is usually realized by two transformers connected as shown in Figure 1(b). Directional couplers of

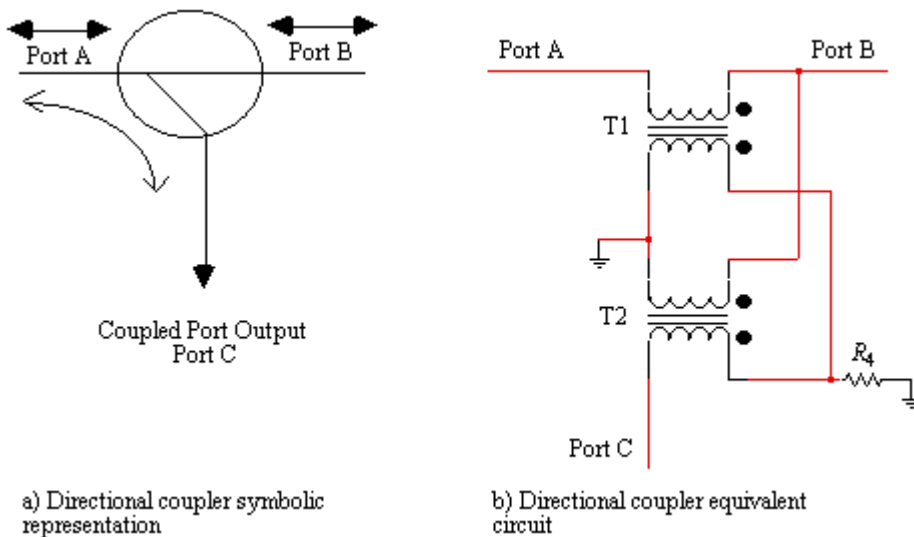


Figure 1. Directional coupler circuit configurations

this type are impedanceless, in that they become 50 ohm , or 75 ohm , directional couplers simply by matching all ports to either 50 ohms , or 75 ohms , respectively.

Figure 2 is a generic model for analysis. In the forward mode of operation,  $V_1$  is the applied input voltage with  $V_2$ ,  $V_3$ , and  $V_4$  replaced by shorts.  $V_o$  then becomes the output voltage. A portion of the output voltage,  $V_o$ , is coupled to  $R_3$ , and ideally no voltage appears across  $R_4$ . In the reverse mode of operation,  $V_2$  is the applied input voltage with  $V_1$ ,  $V_3$ , and  $V_4$  replaced by shorts. The output voltage then becomes the voltage across  $R_1$ . A portion of the output voltage (voltage across  $R_1$ ) is coupled to  $R_4$ , and ideally no voltage appears across  $R_3$ . The turns ratio of  $T_1$  is  $1:N_1$  where  $N_1$  is the secondary of the transformer  $T_1$ . Similarly, the turns ratio of  $T_2$  is  $1:N_2$  where  $N_2$  is the secondary of the transformer  $T_2$ . The location of the dots beside the transformers denote that the voltage across the primary is in phase with the voltage across the secondary. Voltage sources are shown at all four ports because, by shorting each of the three voltages sources to ground, the input impedance of the port with the non-zero voltage source can be found from the nodal equations.

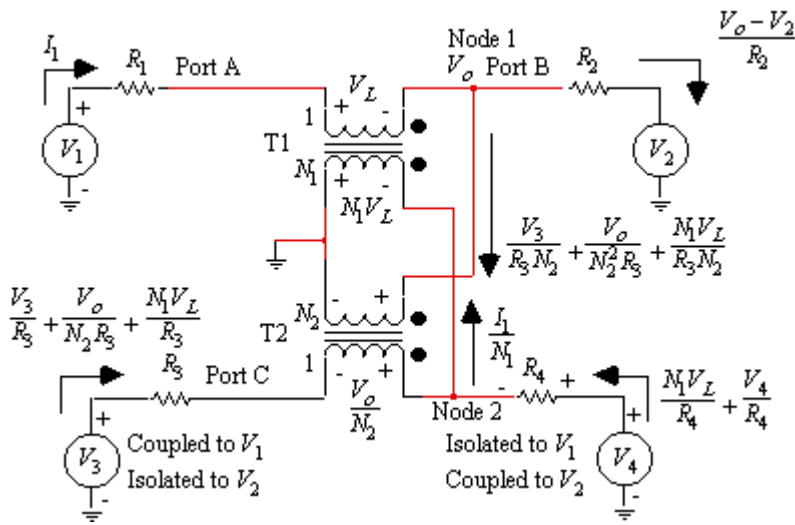


Figure 2. Nodal voltages and currents in a directional coupler

The equations shown in Figure 2 can be written down by inspection using ohm's law and Kirchoff's voltage and current laws.

1.  $I_1$  is defined to be the current through  $R_1$ .
2. The voltage across the primary of  $T_1$  is defined to be  $V_L$ .
3. The voltage at Node 1 is defined to be  $V_o$ .
4. The current flowing through  $R_2$  is therefore the voltage across  $R_2$ , divided by  $R_2$ , or  $(V_o - V_2)/R_2$ .
5. The voltage across the secondary of  $T_1$  is  $N_1$  times the voltage across the primary of  $T_1$ , or  $N_1 V_L$ .
6. If the current through the primary of  $T_1$  is  $I_1$ , then the current through the secondary of  $T_1$  has to be  $I_1/N_1$ .
7. The voltage across the secondary of  $T_2$  has already been denoted as  $V_o$ .
8. Therefore the voltage across the primary of  $T_2$  has to be  $V_o/N_2$ .
9. The current through  $R_3$  has to be the sum of the voltages across  $R_3$  divided by  $R_3$ . These three voltages are  $V_3$ ,  $V_o/N_2$ , and  $N_1 V_L$  and they add since they are all in phase. (If the solution to the equations shows otherwise, then one of the currents will simply be negative indicating that it actually flows in the opposite direction than initially assumed.) The current through  $R_3$  becomes  $V_3/R_3 + V_o/(N_2 R_3) + N_1 V_L/R_3$ .
10. The current through the secondary of  $T_2$  has to be equal to the current through  $R_3$  divided by  $N_2$ , or  $V_3/(R_3 N_2) + V_o/(N_2^2 R_3) + N_1 V_L/(R_3 N_2)$ .

11. The current through R4 is equal to the voltage across R4, divided by R4. The voltages to the left and right of R4 are N1VL and V4, respectively. They add since they are in phase. Therefore the current through R4 is N1VL/R4+V4/R4.

Now the current flowing into Node 1 has to be equal to the currents flowing out of Node 1, therefore

$$I_1 = \frac{V_3}{R_3 N_2} + \frac{V_o}{N_2^2 R_3} + \frac{M_1 V_L}{R_3 N_2} + \frac{V_o - V_2}{R_2} \quad (1)$$

Also the currents flowing into Node 2 have to be equal to the current flowing out of Node 2, or,

$$\frac{I_1}{M_1} = \frac{V_3}{R_3} + \frac{V_o}{N_2 R_3} + \frac{M_1 V_L}{R_3} + \frac{M_1 V_L}{R_4} + \frac{V_4}{R_4} \quad (2)$$

It is necessary to eliminate the variable, VL, using the equation

$$V_L = (V_1 - I_1 R_1 - V_o) \quad (3)$$

Substituting equation (3) into (1) and (2) and rearranging terms, the final nodal equations become

$$\frac{V_3}{R_3} + \frac{M_1 V_1}{R_3} + \frac{M_1 V_1}{R_4} + \frac{V_4}{R_4} + V_o \left( \frac{1}{N_2 R_3} - \frac{M_1}{R_3} - \frac{M_1}{R_4} \right) = I_1 \left( \frac{1}{M_1} + \frac{M_1 R_1}{R_3} + \frac{M_1 R_1}{R_4} \right) \quad (4)$$

and

$$\frac{V_3}{R_3 N_2} + \frac{M_1 V_1}{R_3 N_2} - \frac{V_2}{R_2} + V_o \left( \frac{1}{N_2^2 R_3} - \frac{M_1}{R_3 N_2} + \frac{1}{R_2} \right) = I_1 \left( 1 + \frac{M_1 R_1}{R_3 N_2} \right) \quad (5)$$

Equations (4) and (5) are easily solved for Vo and I1 since V1, V2, V3, and V4 are known and only one is non-zero for a given analysis. From inspection of Figure 2, the input impedances at each port are given by

$$\begin{aligned} \text{For } V_1 \neq 0, \quad R_{in1} &= \frac{V_L + V_o}{I_1} & \text{For } V_3 \neq 0, \quad R_{in3} &= \left( \frac{V_3}{\frac{V_3}{R_3} + \frac{V_o}{N_2 R_3} + \frac{M_1 V_L}{R_3}} \right) - R_3 \\ \text{For } V_2 \neq 0, \quad R_{in2} &= \frac{-V_o}{\frac{V_o - V_2}{R_2}} & \text{For } V_4 \neq 0, \quad R_{in4} &= \frac{M_1 V_L}{\frac{M_1 V_L}{R_4} + \frac{V_4}{R_4}} \end{aligned} \quad (6)$$

The return loss, RL, at port x (for x = 1,2,3, or 4) is given by

$$RL_x = -20 \log \left( \frac{R_x - R_{inx}}{R_x + R_{inx}} \right) \quad (7)$$

In the forward direction ( $V_1$  not equal to 0), from inspection of Figure 2 the loss at the various ports is given by

$$\text{Forward insertion loss} = -20 \log \left( \frac{V_o}{R_2} \right) \left( \frac{R_1 + R_2}{R_1 + R_2} \right) \quad (8)$$

$$\text{Forward coupled port loss} = -20 \log \left( \frac{V_o + N_1 V_L}{N_2} \right) \left( \frac{R_2}{R_1 + R_2} \right) \quad (9)$$

$$\text{Forward isolated port loss} = -20 \log \left( \frac{N_1 V_L}{R_2} \right) \left( \frac{R_1 + R_2}{R_1 + R_2} \right) \quad (10)$$

In the reverse direction ( $V_2$  not equal to 0), the loss at the various ports are given by

$$\text{Reverse insertion loss} = -20 \log \left( \frac{I_1 R_1}{R_1} \right) \left( \frac{R_1 + R_2}{R_1 + R_2} \right) \quad (11)$$

$$\text{Reverse coupled port loss} = -20 \log \left( \frac{N_1 V_L}{R_1} \right) \left( \frac{R_1 + R_2}{R_1 + R_2} \right) \quad (12)$$

$$\text{Reverse isolated port loss} = -20 \log \left( \frac{V_o + N_1 V_L}{N_2} \right) \left( \frac{R_1}{R_1 + R_2} \right) \quad (13)$$

Table 1 summarizes a portion of the design data that is available from the computer program based on the preceding equations. The return loss values in Table 1 are valid for any arbitrary characteristic impedance,  $Z_o$ ; therefore Table 1 can be used to design both 50 ohm and 75 ohm directional couplers. A turns ratio of 1.5 is achieved by 2 turns of wire on the primary, and 3 turns of wire on the secondary. Notice that the coupled port loss is very closely approximated by the equation

$$\text{Coupled Port Loss} \approx 20 \log(N), \text{ for } N = N_1 = N_2 \text{ and } N \geq 2. \quad (14)$$

The range of toroidal based directional couplers can span two decades of frequency and commonly covers the frequency range of 5 MHz to 1 GHz.

Table 1

Directional coupler loss as a function of turns ratio

N1	N2	Insertion Loss	Coupled Port Loss	Input Return Loss	Output Return Loss	Coupled Port Return Loss
1.0	1.0	7.96 dB	1.94 dB	14.0 dB	14.0 dB	14.0 dB
1.5	1.5	2.60 dB	3.94 dB	15.7 dB	15.7 dB	15.7 dB
2.0	2.0	1.29 dB	6.15 dB	19.4 dB	19.4 dB	19.4 dB
2.5	2.5	0.78 dB	8.01 dB	22.7 dB	22.7 dB	22.7 dB
2.5	3.0	0.65 dB	8.76 dB	26.1 dB	22.6 dB	22.6 dB
3.0	2.5	0.65 dB	8.76 dB	22.6 dB	26.1 dB	26.1 dB
3.0	3.0	0.52 dB	9.57 dB	25.6 dB	25.6 dB	25.6 dB
3.0	3.5	0.45 dB	10.2 dB	28.4 dB	25.6 dB	25.6 dB
3.5	3.0	0.44 dB	10.2 dB	25.6 dB	28.4 dB	28.4 dB
3.5	3.5	0.38 dB	10.9 dB	28.2 dB	28.2 dB	28.2 dB
3.5	4.0	0.33 dB	11.5 dB	30.6 dB	28.2 dB	28.2 dB
4.0	3.5	0.33 dB	11.5 dB	28.2 dB	30.6 dB	30.6 dB
4.0	4.0	0.28 dB	12.1 dB	30.4 dB	30.4 dB	30.4 dB
4.0	5.0	0.23 dB	13.0 dB	34.6 dB	30.5 dB	30.5 dB
5.0	4.0	0.23 dB	13.0 dB	30.5 dB	34.6 dB	34.6 dB
5.0	5.0	0.18 dB	14.0 dB	34.2 dB	34.2 dB	34.2 dB
5.0	6.0	0.15 dB	14.7 dB	37.5 dB	34.2 dB	34.2 dB
6.0	5.0	0.15 dB	14.7 dB	34.2 dB	37.5 dB	37.5 dB
6.0	6.0	0.12 dB	15.6 dB	37.3 dB	37.3 dB	37.3 dB
6.0	7.0	0.11 dB	16.2 dB	40.1 dB	37.3 dB	37.3 dB
7.0	6.0	0.11 dB	16.2 dB	37.3 dB	40.1 dB	40.1 dB
7.0	7.0	0.09 dB	16.9 dB	39.9 dB	39.9 dB	39.9 dB

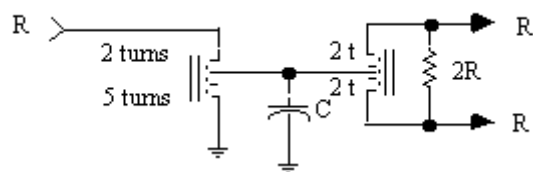


Figure 3. Transformer-type 3.5 dB power splitter.  $R = 75$  for a 75 ohm system.

As the turns ratio of T1 and T2 approach  $N_1 = 1$  and  $N_2 = 1$ , the directional coupler does not degenerate into a 3 dB splitter. If a coupled port loss of 3.5 dB - 5 dB is desired, the splitter configuration shown in Figure 3 should be used. This basic splitter achieves 3.5 dB loss on each port. A resistive pi-pad on the output port defined as the coupled port can give an additional 0-1.5 dB, or more, attenuation. The capacitor, C, is typically on the order of 1 pF and improves return loss.

The ferrite binocular in Figure 4 can be used to realize both the T1 and T2 transformers on a single twin hole ferrite core. Low frequency response is dictated by the ferrite material characteristics. High frequency response is partially governed by total wire length, since the core effects are no longer dominant near the high frequency end (2). Interwinding capacitance, leakage inductance, copper losses and transformer coupling below unity ( $k < 1$ ) also degrade high-end performance. Small shunt capacitances to ground at the coupler ports can be used to improve match and directivity at the expense of bandwidth. At higher frequencies, lead length must be kept to a minimum to limit parasitic inductance. To achieve broadband performance, ground connection lengths must be minimized.

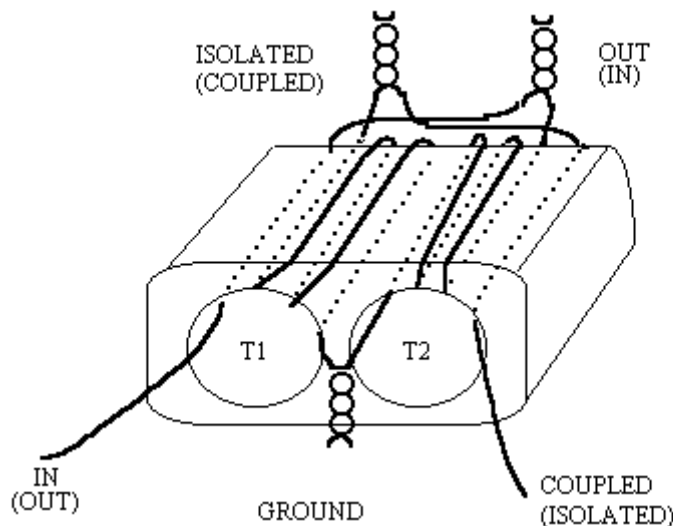


Figure 4. A 10 dB directional coupler.

Increasing the number of turns on the primary is limited by the number of wires that can fit through the core. For Figure 4, a turns ratio of 6:2, instead of 3:1, can give superior results for a given frequency range. (The number of turns is determined by the number of times that the wire is threaded through the center of the core even though it may not make a complete 360 degree turn.) High frequency response increases as core size and wire diameter decrease.

The response of the directional coupler can vary dramatically depending on the interleaving of the primary and the secondary coils. If possible, intersperse the secondary windings with turns from the primary. Designers will often set the spacings of the primary and secondary coils to optimize certain design parameters. The insertion loss at high frequencies can be decreased in the main path at the expense of high frequency response on the coupled port by loosely coupling the primary and the secondary coils of T2 so that less high frequency energy is coupled to the coupled port. Changing the diameter of the primary wire relative to the secondary changes the coupling by tenths of a dB (3). Using heavier gauge magnet wire for the primaries reduces mainline insertion loss and improves power-handling capability. The isolated port should connect to a good  $Z_0$  ohm load impedance, such as a small chip resistor. A small capacitor in the range of 0.5 - 2 pF can be connected in parallel with this resistor to improve directivity.

A response typical for the coupled port is shown in Figure 5 using a Fair-Rite core and magnet wire. The coupled port frequency response is flat within  $\pm 0.5$  dB from less than 50 MHz to 900 MHz.

McWhorter provides other examples using different materials (2). A 10 dB coupler was fabricated on a Siemens B62152-A0008-X030 core. Each primary consisted of one turn of #33 magnet wire. Each secondary consisted of three turns of #38 magnet wire. This coupler was used in a CW environment with excellent performance in the 10-1000 MHz band.

Two Micrometals T25-0 phenolic toroids were used to create a 20 dB coupler for use in the 500-2200 MHz band. Each primary consisted of one turn of #32 silver-coated Teflon-insulated magnet wire. Each secondary consisted of 10 turns of #36 Formvar-coated magnet wire.

A computer program is presented as an aid in designing transformer based directional couplers. It is provided in a DOS BASIC version (with source), a DOS Visual Basic version, and in a Windows Visual Basic version. The program solves the equations derived in this article for arbitrary termination impedances and arbitrary turns ratios. A sample output screen is given in Figure 6 for a directional coupler terminated in  $75 \Omega$  on all ports and with a turns ratio of 5:1 for both T1 and T2.

The computer program will accept turns ratios for T1 and T2 that are greater than unity, less than unity, or negative. A turns ratio of 0.5 would indicate 2 turns on the primary for every turn of the secondary. A negative turns ratio would indicate that the user desires to reverse the polarity of the secondary of the transformer relative to the definition given in Figure 2. As can be seen from Figure 6, the return loss of a directional coupler theoretically never provides a perfect match. The total input power into the directional coupler is computed and compared to the sum of the power flowing out of the remaining three ports as a check on the accuracy of the computations.

The equations derived in this article apply equally to both the  $0^\circ$  and the  $180^\circ$  directional coupler. These couplers are shown in Figure 7. The phase of the coupled port depends only on which end of the directional coupler is defined as the input.

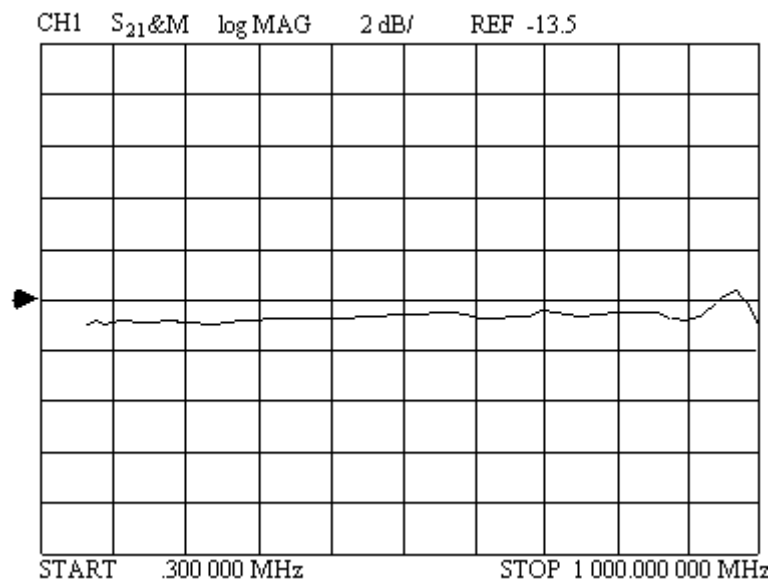


Figure 5. Typical coupled port response.

```

R1 =[75 ]   R2 =[75 ]   R3 =[75 ]   R4 =[75 ]   N1 =[5 ]   N2 =[5 ]

Rin =      [ 72.11765 ]   Input Return Loss =      [ 34.16703 dB]
Rout =     [ 77.99755 ]   Output Return Loss =     [ 34.16704 dB]
Rcoupled = [ 72.11765 ]   Coupled Port Return Loss = [ 34.16705 dB]
Risolated = [ 77.99755 ]   Isolated Port Return Loss = [ 34.16704 dB]

Output Voltage = [ .4898041 ] Total Input Power = [ 3.332054E-03 ]
Reverse Output Voltage = [ .4898041 ] Total Output Power =[ 3.332054E-03 ]
Coupled Voltage = [ 9.995982E-02]
Reverse Coupled Voltage = [ 9.995996E-02]
Isolated Voltage = [ 1.998995E-03]
Reverse Isolated Voltage =[ 1.999256E-03]

Insertion Loss =      [ .1789969 dB ]
Reverse Insertion Loss = [ .1789974 dB ]
Coupled Port Loss =   [ 13.98644 dB ]
Reverse Coupled Port Loss = [ 13.98643 dB ]
Isolated Port Loss =  [ 47.97535 dB ]
Reverse Isolated Port Loss = [ 47.97422 dB ]

```

Figure 6. Sample design output screen

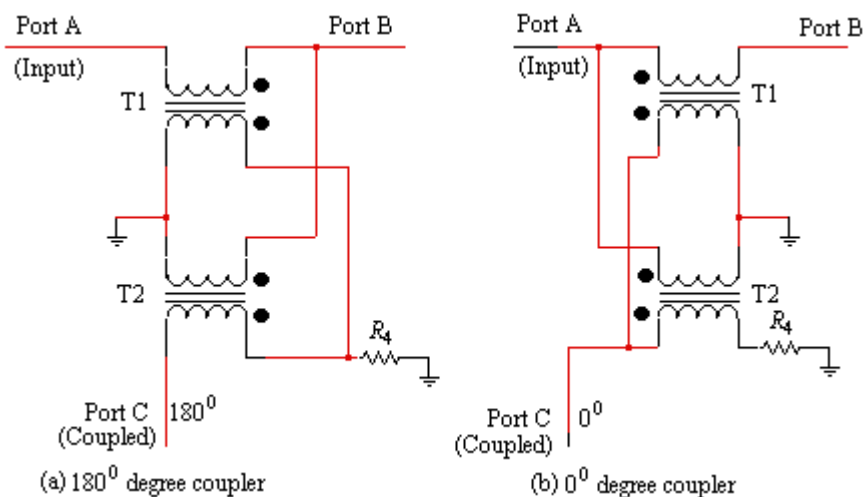


Figure 7. Definition of (a) inverting coupler, and (b) non-inverting coupler

References:

1. U.S. Patent Number 3,426,298, *Broadband Directional Coupler*.
2. Mark McWhorter, *Broadband RF Transformer Directional Couplers*, RF Design Magazine, July 1991, pp 53-58
3. Nic Hamilton, *RF Transformers Part 1: The Windings*, RF Design Magazine, June 1995, pp 36-44